

FS2Crew ATR – Flowchart V1.2



English

Instructions:

Please read the FS2Crew ATR manual before using the flowchart!

The flowchart contains almost every action and reaction of the Captain (CA), the First Officer (F/O), the Flight Attendant (FA) and the Ground Crew (OPS/GROUND). Just follow the flows through the different phases of flight.

[Bold/Underline]: FS2Crew commands

Bold: Events, that trigger actions / headlines

Normal text: Non-FS2Crew actions

Italic text: FS2Crew audio feedback

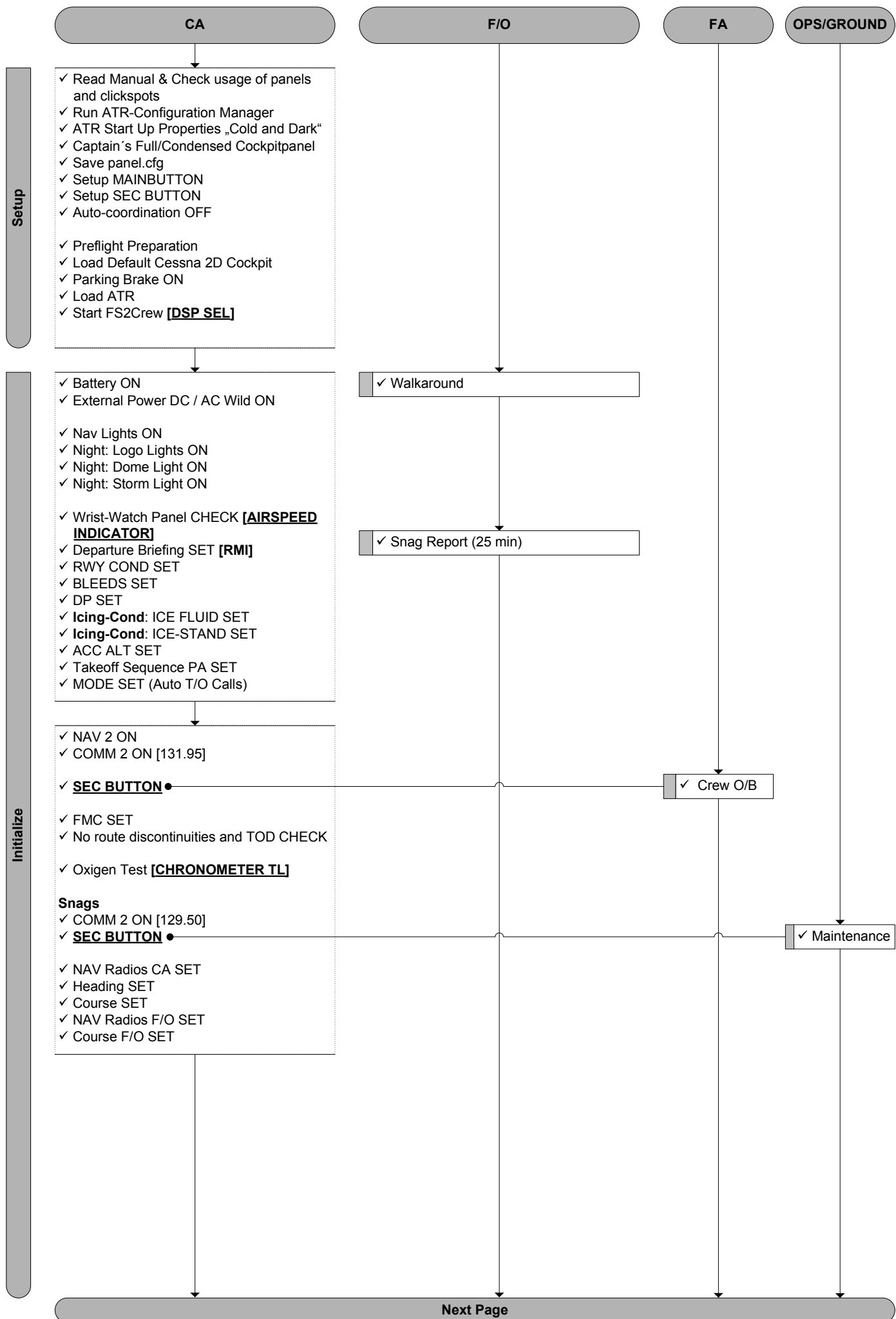
If you have any questions, feel free to contact me!

History:

V1.0: First Version, for tutorial flight without special operations

V1.1: Improved normal flows
Anti-ice Procedures
Include these flows in the specific phase of flight.

V1.2: Improved normal flows
Go Around Procedures – **new!**
Non Precision Approach Procedures – **new!**
Visual Approach Procedures – **new!**



CA

F/O

FA

OPS/GROUND

Flight Deck Preparation Flow (22 - 18 min)

Overhead Panel

- ✓ Electrical fuel pumps – On
- ✓ Door switch test – Press
- ✓ Engine #1 fire test (Squib, Loop and Fire test)
- ✓ Nav and logo lights – Check on
- ✓ Prop brake – Check on
- ✓ Electrical system – Check all buttons in
- ✓ CVR – Test (CVR will be set 'on' on the pedestal and 'off' after the test)
- ✓ No Smoking and Seatbelt signs – on
- ✓ Probe heating – Capt and FO on, STBY off
- ✓ Windshield Heating – On
- ✓ ACW system – Check all buttons in
- ✓ HYD system – Check all buttons in
- ✓ Annunciator lights – Test
- ✓ Bleeds – Off
- ✓ Packs – On
- ✓ Oxygen main supply – On
- ✓ Oxygen pressure – Check
- ✓ Compartment smoke – Test
- ✓ Exhaust mode – Rest
- ✓ Engine #2 fire test (Squib, Loop and Fire Test)

Pedestal

- ✓ Instrument/panel/flood lights – As required
- ✓ ATPCS – Test
- ✓ FDEP – Check time and Date / Enter flight number
- ✓ Trims – Check
- ✓ ADF/COM/XPDR – On (Xpdr to Standby)
- ✓ TCAS – Test
- ✓ TO/GA button – Press
- ✓ Flaps/PLs/CLs – Check
- ✓ Radar – Standby
- ✓ EFIS – All CRTs on, check composite mode
- ✓ Set RA DH > 100, press to test and reset DH to 0

Center Panel

- ✓ Fuel Quantity Indicator – Test
- ✓ ADC Switch – 1 on even days, 2 on odd days
- ✓ Stby ADI – Pull to erect
- ✓ Fuel Used – Reset
- ✓ Auto Press Panel – Test
- ✓ Landing Elevation – Set
- ✓ Antiskid – Test

FO Panel

- ✓ Check all instruments
- ✓ TCAS – RNG 12 NM, ABV
- ✓ GPWS – Test
- ✓ Oxygen Mask – Test

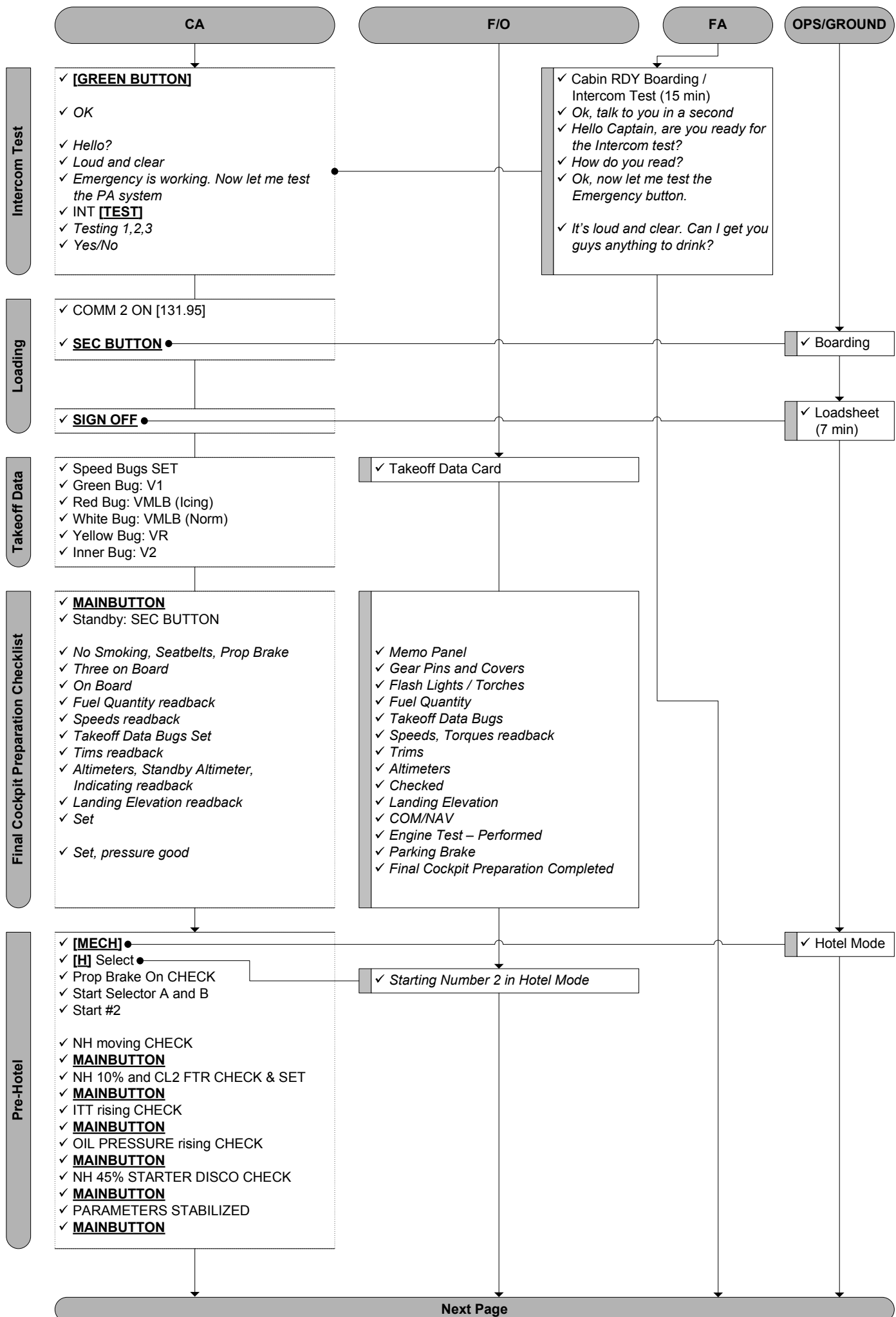
Glareshield

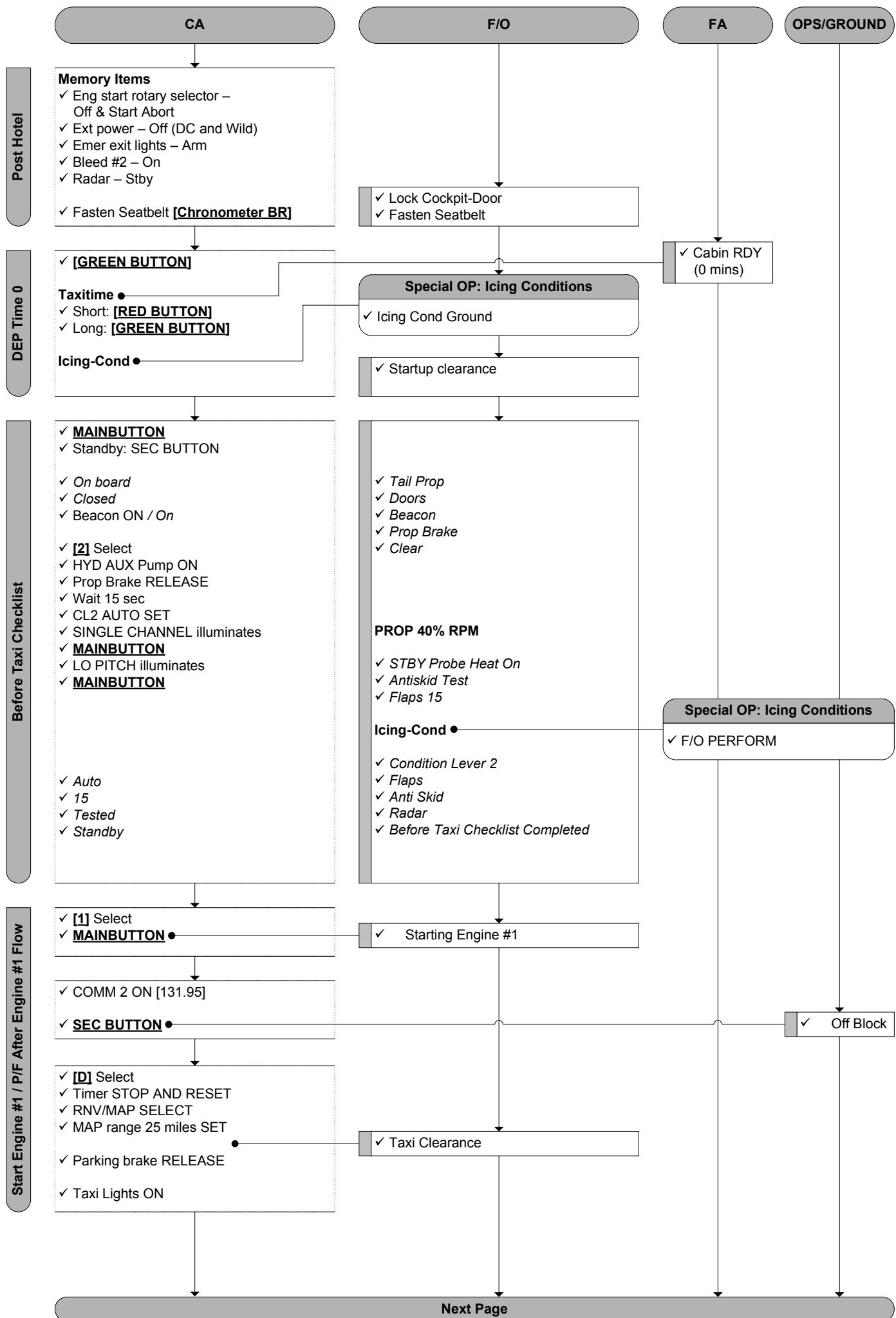
- ✓ NAV 1 – On and test
- ✓ ADU – set HDG LO IAS (FO will set Alt to 5000 and IAS to V2 + 10)*
- ✓ NAV 2 – On and test

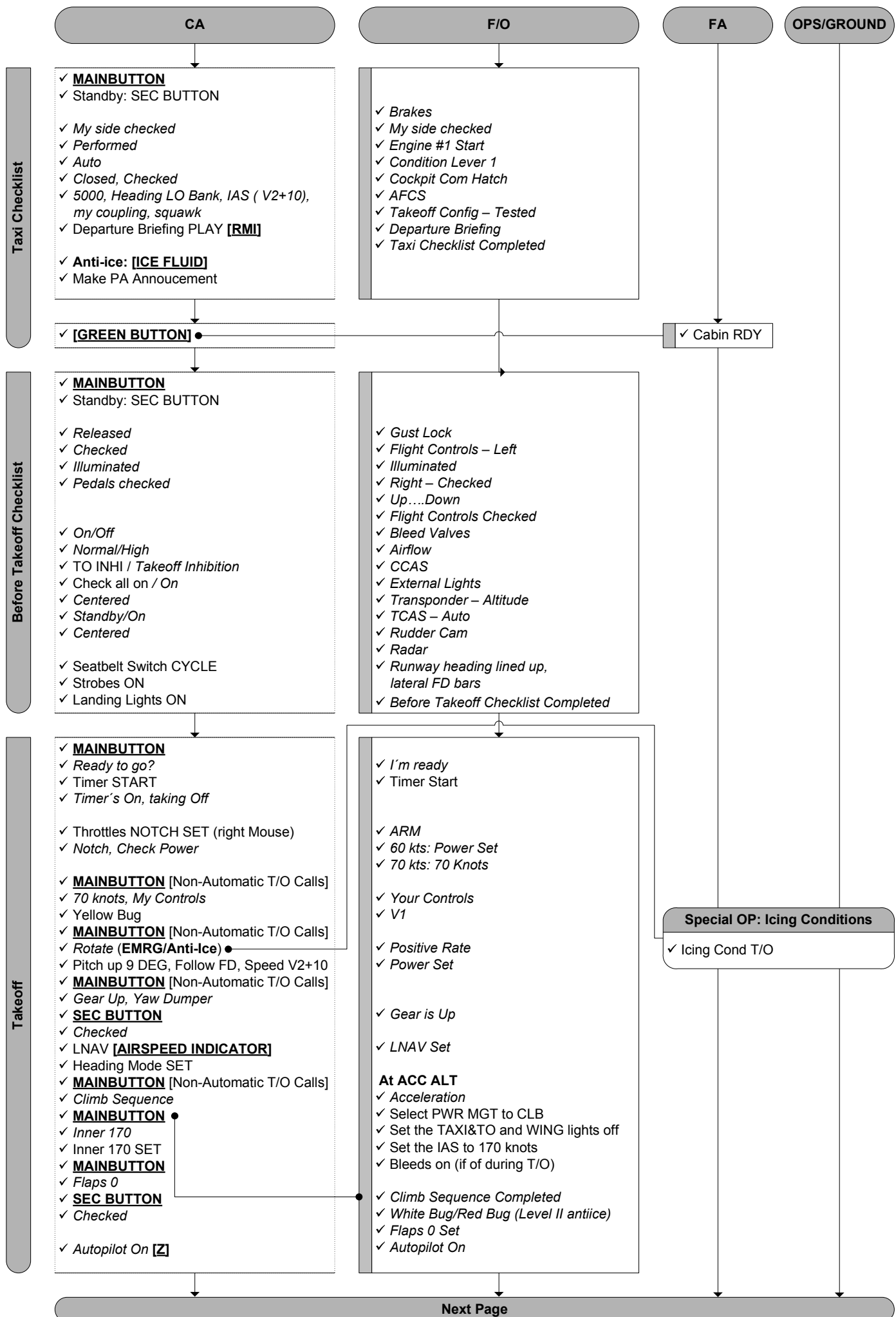
Pedestal (Again)

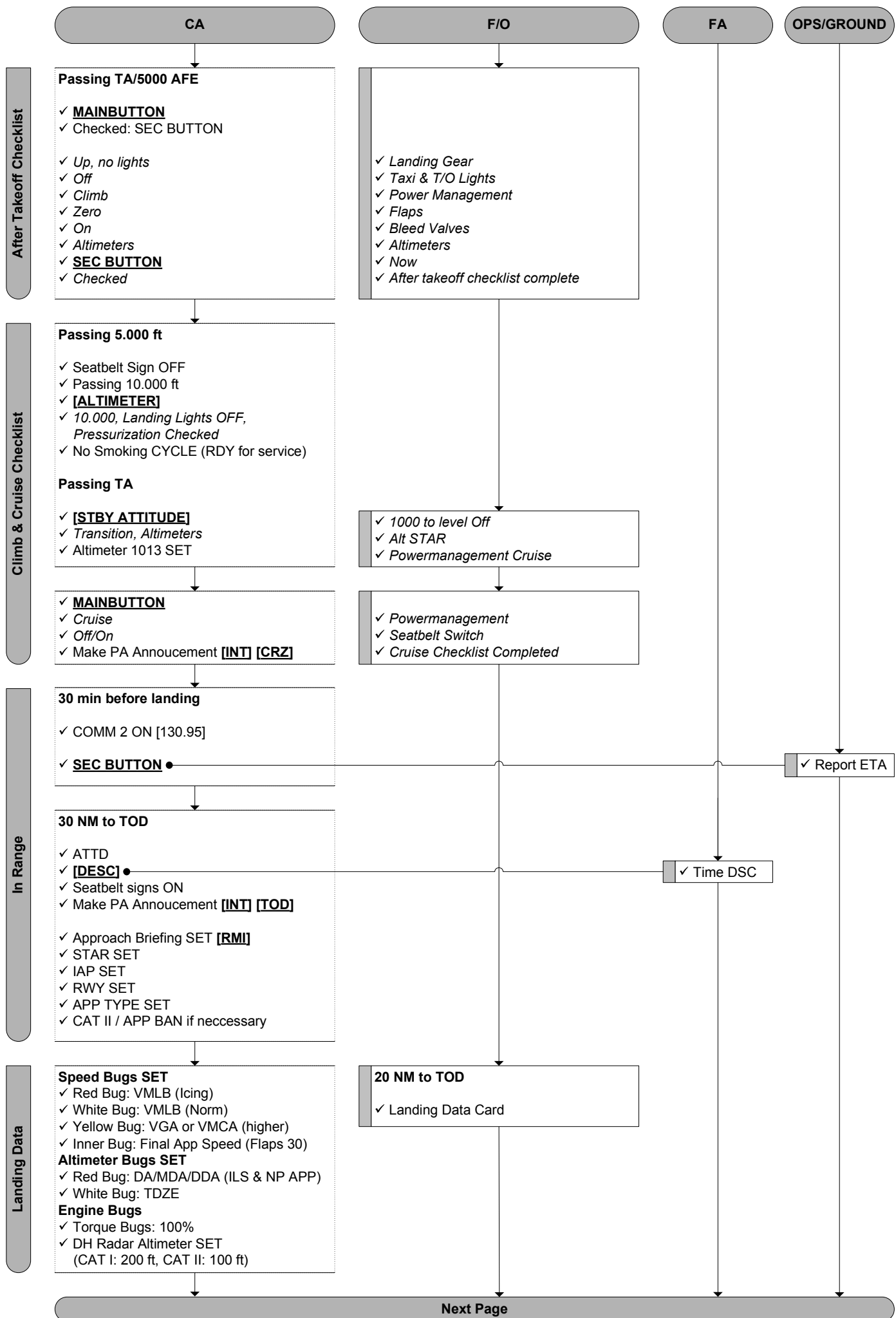
- ✓ Radar Test then Off
- ✓ Talks to FA

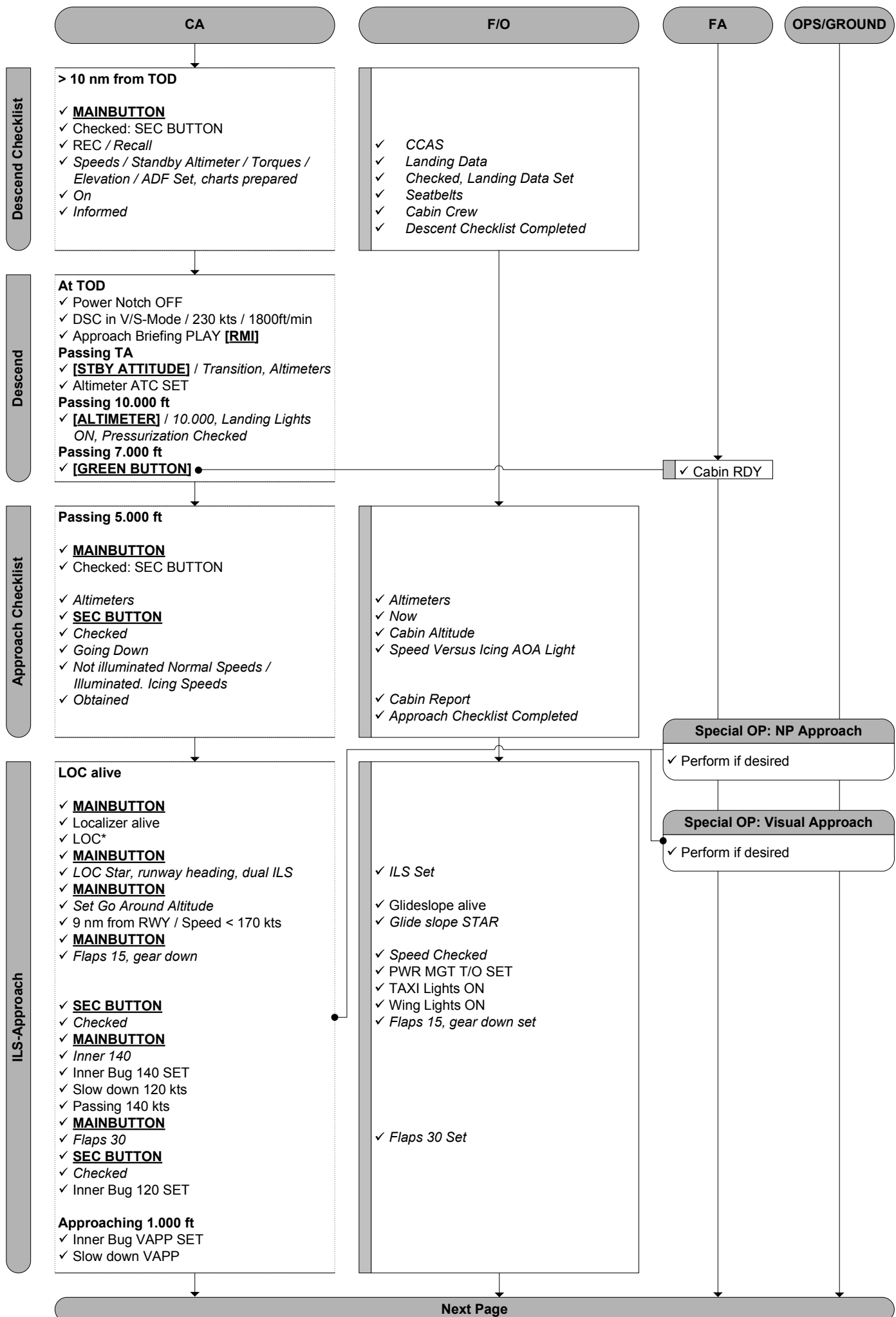
Next Page

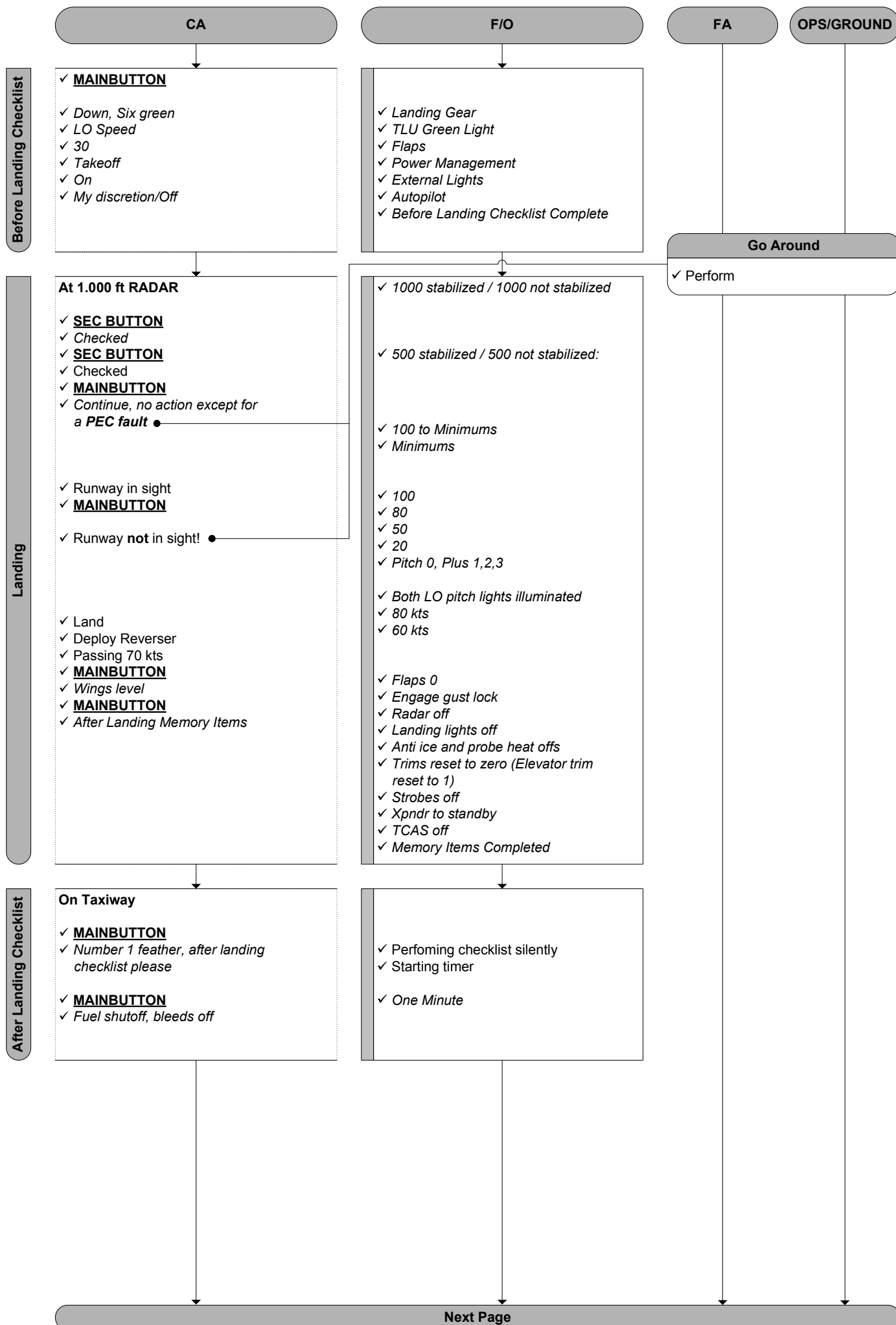


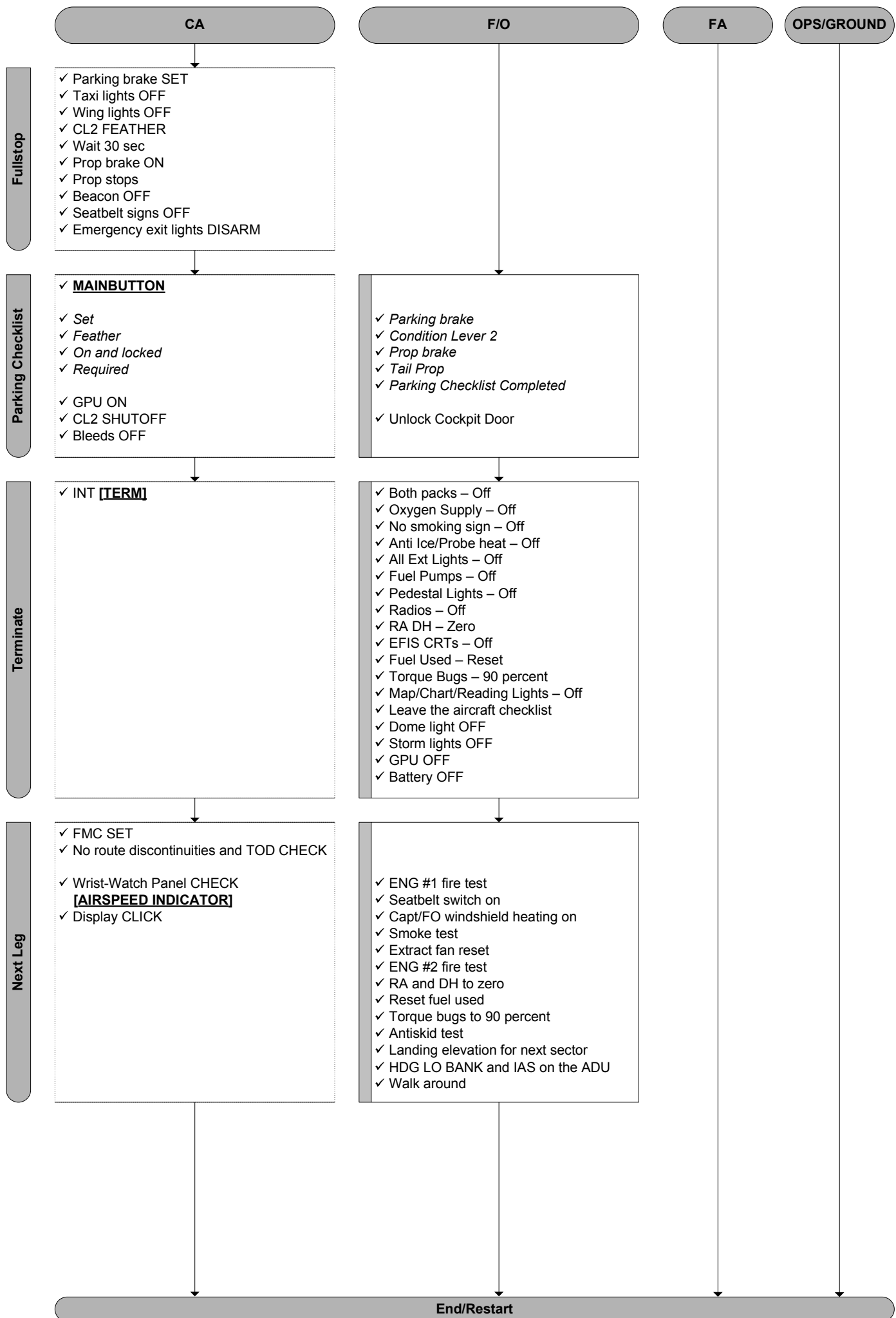


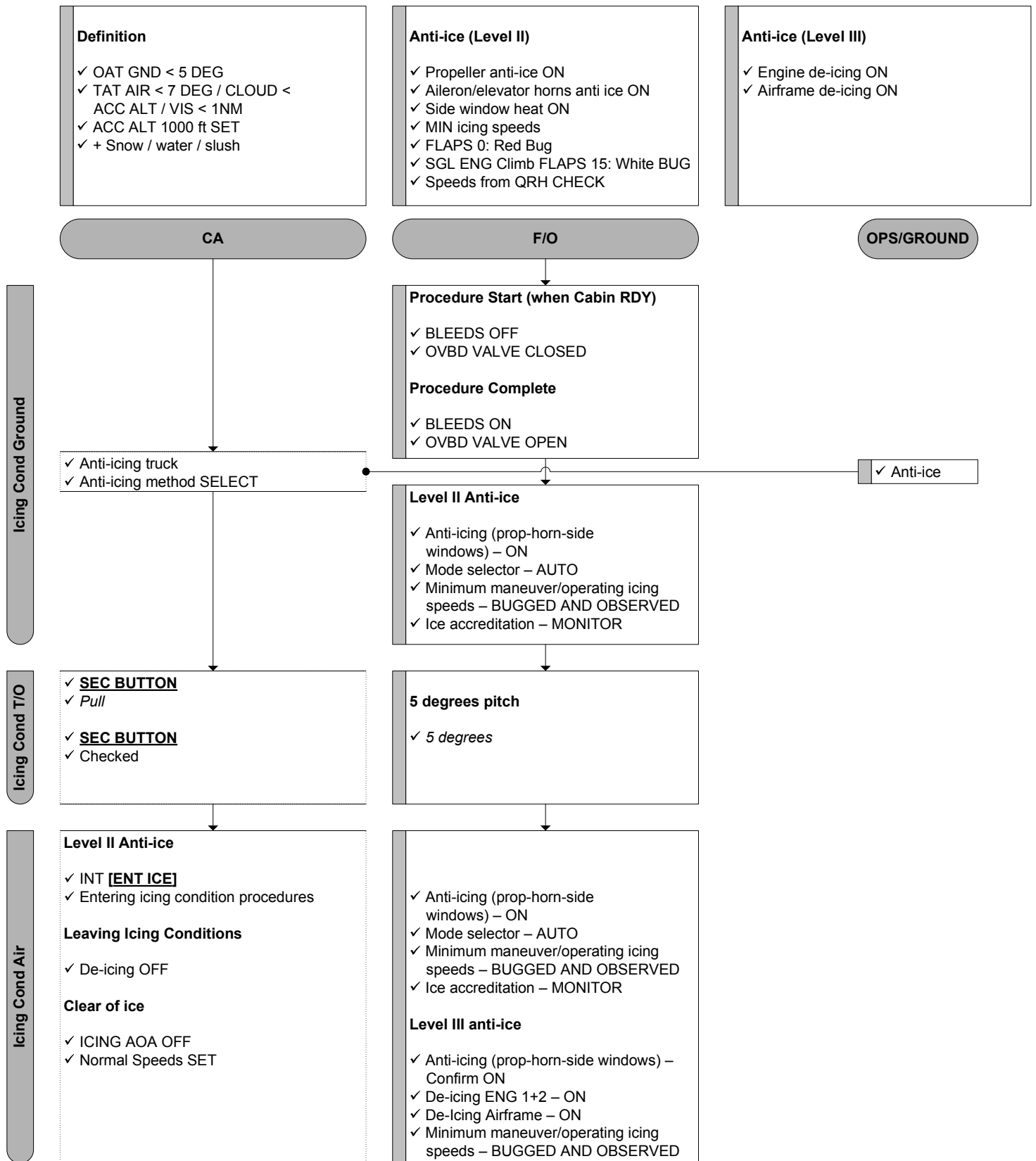












Definition

- ✓ Performed when RWY not in sight at Minimums
- ✓ Because of traffic or emergency during landing

CA

F/O

Initiate

- ✓ **[ADC-SW Light]**
- ✓ Advance PL to RAMP
- ✓ *Going around, Flaps 15, Check Power*
- ✓ Gear up
- ✓ Heading, Lo Bank, IAS
- ✓ **SEC BUTTON**
- ✓ *Checked*
- ✓ **MAINBUTTON**
- ✓ *Climb Sequence*
- ✓ **MAINBUTTON**
- ✓ *Inner 170*
- ✓ Inner 170 SET
- ✓ **MAINBUTTON**
- ✓ *Flaps 0*
- ✓ **SEC BUTTON**
- ✓ *Checked*

- ✓ *Power Set, Flaps 15*
- ✓ *Positive Rate*
- ✓ *Gear up Set*
- ✓ *Heading Lo Bank, IAS Set*

- ✓ Select PWR MGT to CLB
- ✓ Set the TAXI&TO and WING lights off
- ✓ Set the IAS to 170 knots
- ✓ Bleeds on (if of during T/O)
- ✓ *Climb Sequence Completed*
- ✓ *White Bug/Red Bug (Level II antiice)*
- ✓ *Flaps 0 Set*

Go Around

After Takeoff Checklist

- ✓ **MAINBUTTON**
- ✓ Checked: SEC BUTTON
- ✓ *Up, no lights*
- ✓ *Off*
- ✓ *Climb*
- ✓ *Zero*
- ✓ *On*
- ✓ *Altimeters*
- ✓ **SEC BUTTON**
- ✓ *Checked*

- ✓ *Landing Gear*
- ✓ *Taxi & T/O Lights*
- ✓ *Power Management*
- ✓ *Flaps*
- ✓ *Bleed Valves*
- ✓ *Altimeters*
- ✓ *Now*
- ✓ *After takeoff checklist complete*

Reconfigure

- ✓ Approach Briefing SET **[RMI]**
- ✓ STAR SET
- ✓ IAP SET
- ✓ RWY SET
- ✓ APP TYPE SET
- ✓ CAT II / APP BAN if neccessary

Definition

- ✓ An instrument approach without vertical guidance
- ✓ Using NDB, VOR, LOC, VOR-DME, LOC-DME or BC

3 approach segments:

- ✓ **Initial approach:** IAF to IF
- ✓ **Intermediate approach:** IF to FAF
- ✓ Setup for Landing: Configuration, Speeds, Course, Briefings and Checklists ready
- ✓ **Final approach:** FAF to MDH, VDP or MAP

CA

F/O

Intercepting Approach Course

- ✓ Non Precision Approach (LOC)
- ✓ **[ASI]**
- ✓ Localizer alive
- ✓ Non Precision Approach (NDB)
- ✓ **[ASI]**
- ✓ 5 Degrees
- ✓ Non Precision Approach (VOR)
- ✓ **[ASI]**
- ✓ Course alive
- ✓ Autopilot OFF **[Z]**
- ✓ Autopilot OFF
- ✓ STBY Mode, RWY Heading, Check go around Altitude
- ✓ **MAINBUTTON**
- ✓ Flaps 15, gear down
- ✓ **SEC BUTTON**
- ✓ Checked
- ✓ **MAINBUTTON**
- ✓ Inner 140
- ✓ Inner Bug 140 SET
- ✓ Slow down 120 kts
- ✓ Passing 140 kts
- ✓ **MAINBUTTON**
- ✓ Flaps 30
- ✓ **SEC BUTTON**
- ✓ Checked
- ✓ Inner Bug 120 SET

- ✓ Speed Checked
- ✓ PWR MGT T/O SET
- ✓ TAXI Lights ON
- ✓ Wing Lights ON
- ✓ Flaps 15, gear down set

- ✓ Flaps 30 Set

NP Approach

Definition

- ✓ Standard traffic pattern using the autopilot

3 segments:

- ✓ **Downwind:** 1000-1500 ft at 160 kts or RED BUG + 10 in ICING COND
- ✓ **Base**
- ✓ Setup for Landing: Configuration, Speeds, Course, Briefings and Checklists ready
- ✓ **Final approach**

CA

F/O

Visual Approach

On Base

- ✓ **MAINBUTTON**
- ✓ *Flaps 15, gear down*
- ✓ **SEC BUTTON**
- ✓ *Checked*

- ✓ *Speed Checked*
- ✓ *PWR MGT T/O SET*
- ✓ *TAXI Lights ON*
- ✓ *Wing Lights ON*
- ✓ *Flaps 15, gear down set*

Before Landing Checklist

- ✓ **MAINBUTTON**
- ✓ *Down, Six green*
- ✓ *LO Speed*
- ✓ *30*
- ✓ *Takeoff*
- ✓ *On*
- ✓ *My discretion/Off*

- ✓ *Landing Gear*
- ✓ *TLU Green Light*
- ✓ *Flaps*
- ✓ *Power Management*
- ✓ *External Lights*
- ✓ *Autopilot*
- ✓ *Before Landing Checklist Complete*

Visual Approach

- ✓ **MAINBUTTON**
- ✓ *Inner 140*
- ✓ *Inner Bug 140 SET*
- ✓ *Slow down 120 kts*
- ✓ *Passing 140 kts*
- ✓ **MAINBUTTON**
- ✓ *Flaps 30*
- ✓ **SEC BUTTON**
- ✓ *Checked*
- ✓ *Inner Bug 120 SET*

On Final Approach in 500 ft

- ✓ *Autopilot OFF [Z]*
- ✓ *Land*

- ✓ *Flaps 30 Set*